

School Facilities and Grade Organization Study

Oneida City School District

Advisory Committee

August 29, 2023



Castallo and Silky LLC
Stephen Bocciolatt, Consultant

Agenda

- Review Minutes from 7/24/2023 Meeting
- Comments from Upstairs Tour of Costello Training Center
- Grade Configuration Options for the Elementary Buildings
 - **Review of draft building maps for Option 2 and Option 4**
 - Four Elementary School Buildings
 - ❖ Option 1 - Status Quo - (4) K- 5 Neighborhood Schools
 - ❖ Option 2 - Grade Center Plan - (2) Schools: Grades K-2; (2) Schools: Grades 3-5
 - Three Elementary School Buildings - Close an Elementary School
 - ❖ Option 3 - (3) K-5 Neighborhood Schools
 - ❖ Option 4 - (3) Grade Center Schools (K-1; 2-3; 4-5)
 - If an elementary school is closed (option 3 or 4), should the district
 - ❖ Keep the building for district use
(i.e. Full-day Pre-K program; district offices, other)
 - Sell or lease district office building
 - ❖ Lease the elementary building to another organization
 - ❖ Sell the elementary building
 - Costello Transportation Building
 - ❖ Upstairs area - currently leased by BOCES
- Discussion of Grade Configuration Options – Breakout Session
- Public Questions/Comments
- Next Meeting Dates/Location

Purpose of the Study/Critical Question

”In considering a number of options, is there a better way educationally and fiscally to reconfigure the grades and facilities to provide a sound instructional program now and in the future”?



Two Common Approaches to Organizing Elementary Attendance Zones

- A. Neighborhood School Concept-Each elementary school contains all elementary grades and is generally organized around “neighborhoods.”
- B. Grade Center Concept (Princeton Plan)-Each elementary school is generally organized around grades, often creating primary schools and intermediate schools within a school district.



Grade Configuration Options

- Grade Configuration Options for the Elementary Buildings –
 - **Review of draft grade center building maps for Option 2 and Option 4**
 - Four Elementary School Buildings
 - ❖ Option 1 - Status Quo - (4) K- 5 Neighborhood Schools
 - ❖ Option 2 - Grade Center Plan - (2) Schools: Grades K-2; (2) Schools: Grades 3-5
 - Three Elementary School Buildings - Close an Elementary School
 - ❖ Option 3 - (3) K-5 Neighborhood Schools
 - ❖ Option 4 - (3) Grade Center Schools (K-1; 2-3; 4-5)
 - If an elementary school is closed (option 3 or 4), should the district
 - ❖ Keep the building for district use
(i.e. Full-day Pre-K program; district offices, other)
 - Sell or lease district office building
 - ❖ Lease the elementary building to another organization
 - ❖ Sell the elementary building
 - Costello Transportation Building
 - ❖ Upstairs area - currently leased by BOCES
- Other Possible Options, if any – To Be Determined

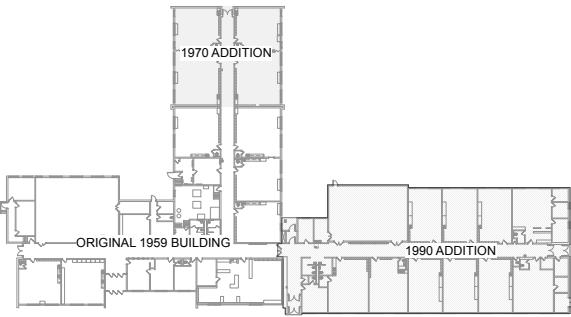
Grade Configuration: Key Questions

- Is it prudent to keep four elementary school buildings?
 - Educationally
 - Financially
 - ❖ If so, in which configuration?
 - ❖ If not, which elementary school should the district close?
- If an elementary school is closed, should the district
 - Keep it for district use (i.e. Pre-K; district offices, other)
 - Lease it to another organization
 - Sell it

Draft Building Map

Grade Center Configuration

- Two Schools: (K-2)
- Two Schools: (3-5)





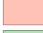
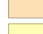



FIRST FLOOR VINTAGE PLAN



FIRST FLOOR PLAN

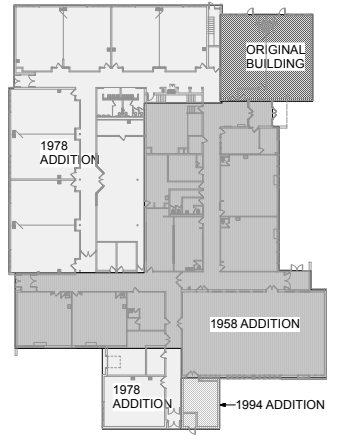
Pick-up Drive

LEGEND

	KINDERGARTEN		PRE-K
	1ST GRADE		SPECIAL EDUCATION
	2ND GRADE		SUPPORT SERVICES
			SPECIAL SUBJECT






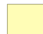
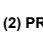

(2) PRE-K CLASSROOMS
 (3) KINDERGARTEN CLASSROOMS
 (3) 1ST GRADE CLASSROOMS
 (3) 2ND GRADE CLASSROOMS
 (6) SPECIAL ED CLASSROOMS
 (1) FULL SIZE SUPPORT CLASSROOM [OT/PT/SPEECH]
 (5) SUPPORT SERVICES
 (2) FULL SIZE SPECIAL SUBJECT CLASSROOMS [ART & MUSIC]

K-2



FIRST FLOOR VINTAGE PLAN

LEGEND

	KINDERGARTEN		PRE-K
	1ST GRADE		SPECIAL EDUCATION
	2ND GRADE		SUPPORT SERVICES
	SPECIAL SUBJECT		SPECIAL SUBJECT

(2) PRE-K CLASSROOMS
 (3) KINDERGARTEN CLASSROOMS
 (3) 1ST GRADE CLASSROOMS
 (3) 2ND GRADE CLASSROOMS
 (2) SPECIAL ED CLASSROOMS
 (5) SUPPORT SERVICES
 (2) FULL SIZE SPECIAL SUBJECT CLASSROOMS [ART & MUSIC]



OVERALL FLOOR PLAN

Parking lot

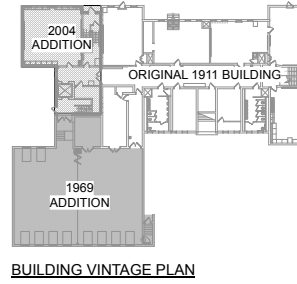
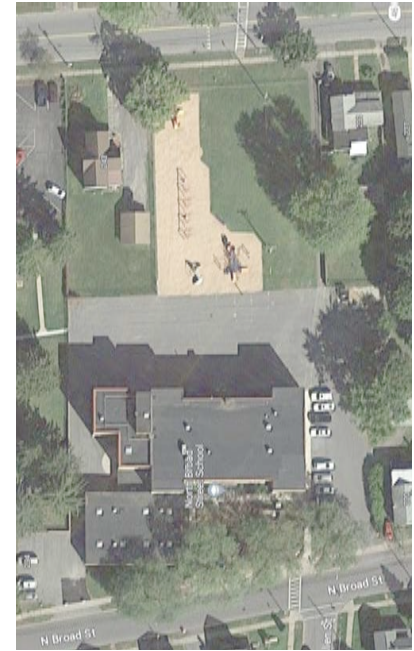
K-Playground

Parking Lot





Street

Street

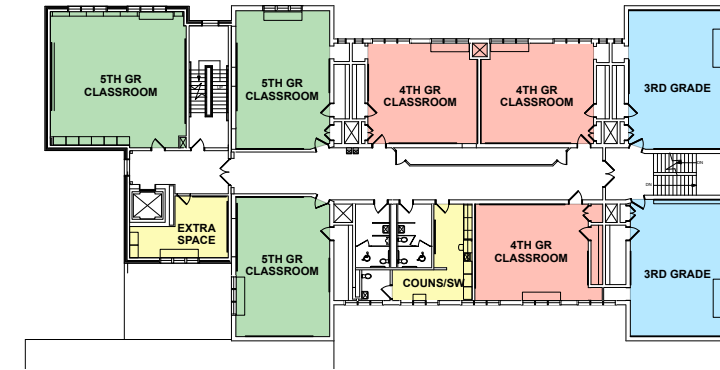
Playground



LEGEND

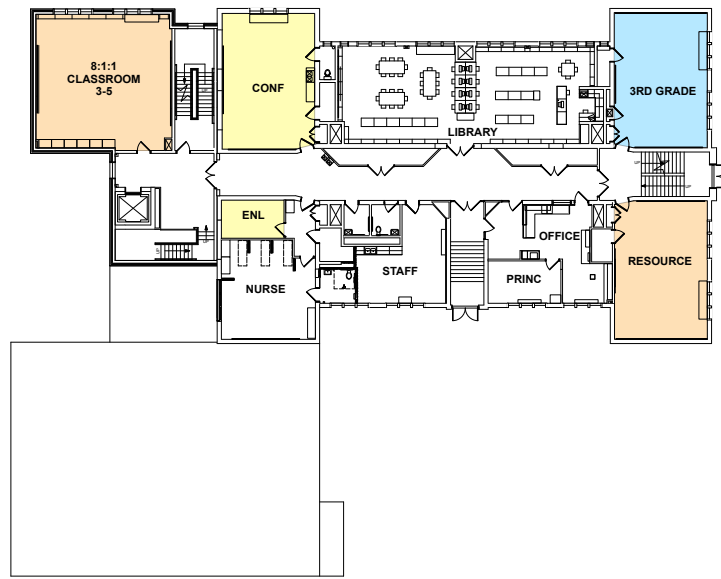
	3RD GRADE		SPECIAL EDUCATION
	4TH GRADE		SUPPORT SERVICES
	5TH GRADE		SPECIAL SUBJECT

- (3) 3RD GRADE CLASSROOMS
- (3) 4TH GRADE CLASSROOMS
- (3) 5TH GRADE CLASSROOMS
- (2) SPECIAL ED CLASSROOMS
- (2) FULL SIZE SUPPORT CLASSROOMS [OT/PT/SPEECH, READING]
- (4) SUPPORT SERVICES
- (3) FULL SIZE SPECIAL SUBJECT CLASSROOMS [MUSIC/CHORUS, ART, BAND]



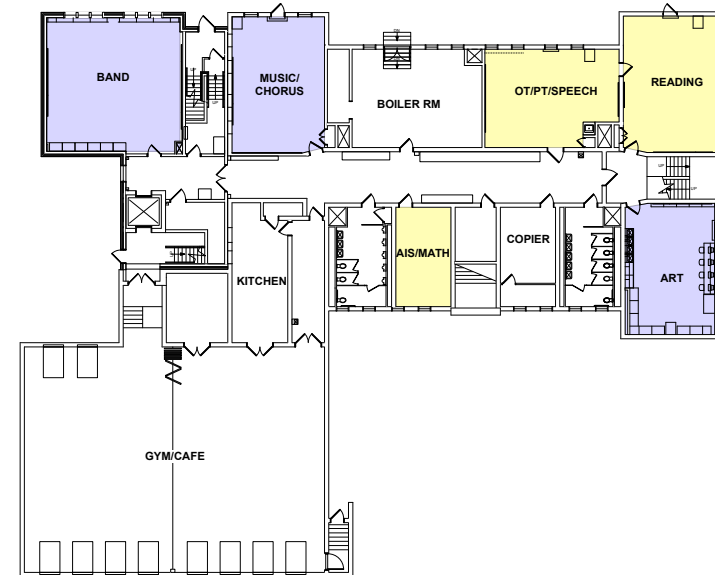
Playground

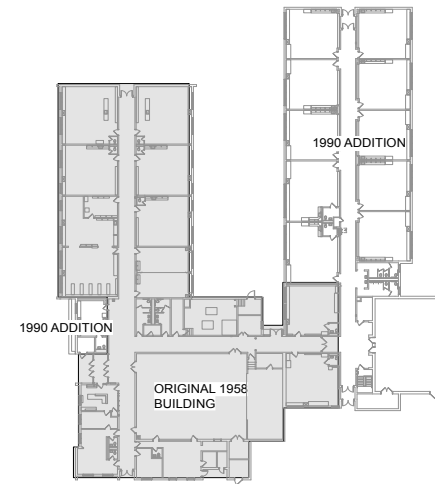
Parking Lot



Street

Parking Lot





FIRST FLOOR VINTAGE PLAN

LEGEND

 3RD GRADE	 SPECIAL EDUCATION
 4TH GRADE	 SUPPORT SERVICES
 5TH GRADE	 SPECIAL SUBJECT

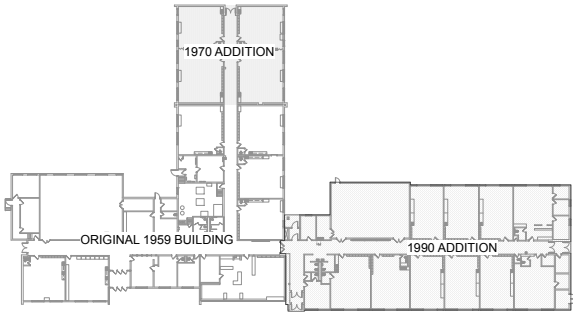
(3) 3RD GRADE CLASSROOMS
 (3) 4TH GRADE CLASSROOMS
 (3) 5TH GRADE CLASSROOMS
 (3) SPECIAL ED CLASSROOMS
 (1) FULL SIZE SUPPORT CLASSROOM [OT/PT/SPEECH]
 (5) SUPPORT SERVICES
 (3) FULL SIZE SPECIAL SUBJECT CLASSROOMS [BAND, MUSIC/CHORUS, ART]
 (1) EXTRA FULL SIZE CLASSROOM



OVERALL FLOOR PLAN

Draft Building Map

Grade Center Configuration
Three Schools
(K-1; 2-3; 4-5)



FIRST FLOOR VINTAGE PLAN

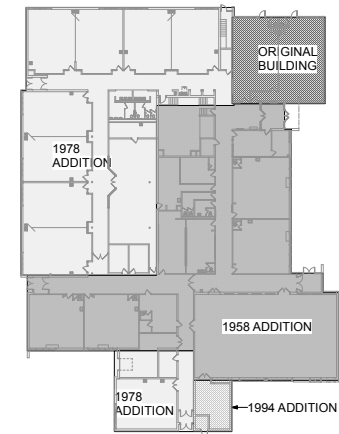


FIRST FLOOR PLAN

Pick-up Drive

Parking Lot

Playground

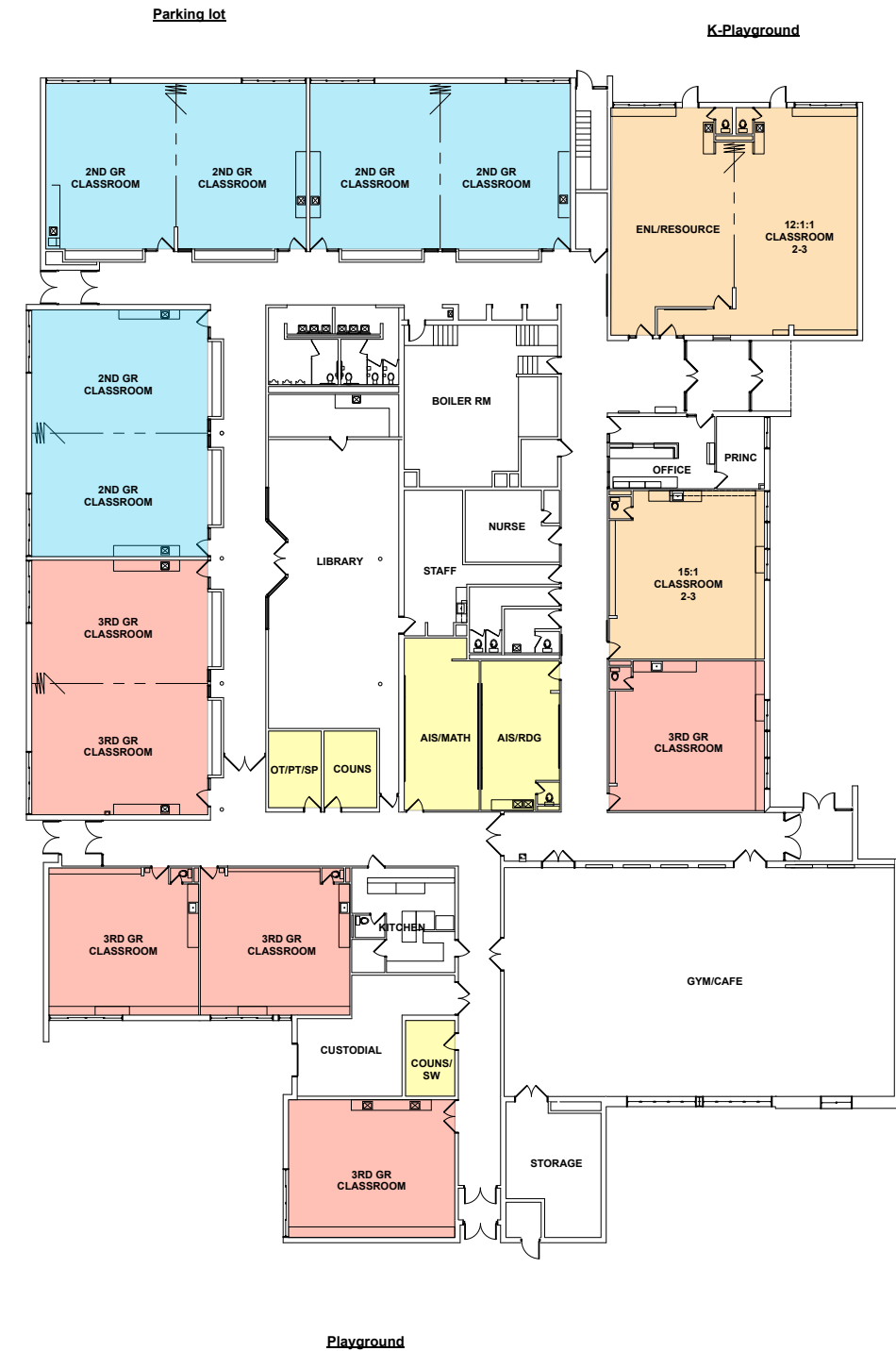


FIRST FLOOR VINTAGE PLAN

LEGEND

 2ND GRADE	 SPECIAL EDUCATION
 3RD GRADE	 SUPPORT SERVICES

(6) 2ND CLASSROOMS
 (6) 3RD GRADE CLASSROOMS
 (3) SPECIAL ED CLASSROOMS
 (5) SUPPORT SERVICES
 (0) FULL SIZE SPECIAL SUBJECT CLASSROOMS
 (NO ART OR MUSIC CLASSROOMS SHOWN)



OVERALL FLOOR PLAN

Street

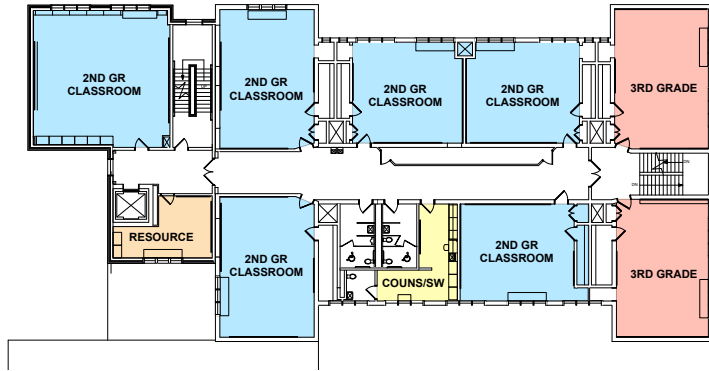
Playground

Parking lot

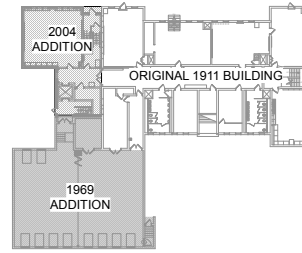
K-Playground

Parking Lot

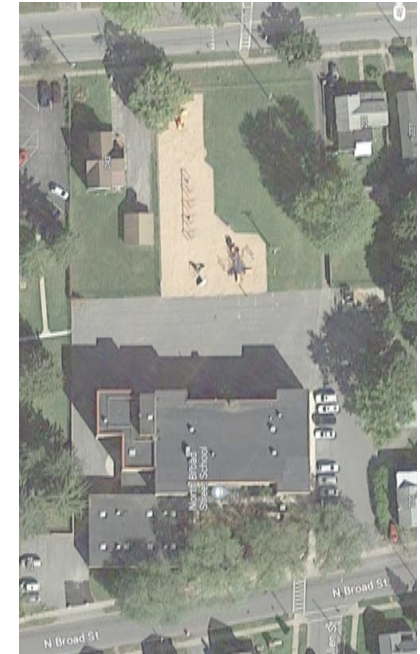
Street



SECOND FLOOR PLAN



BUILDING VINTAGE PLAN



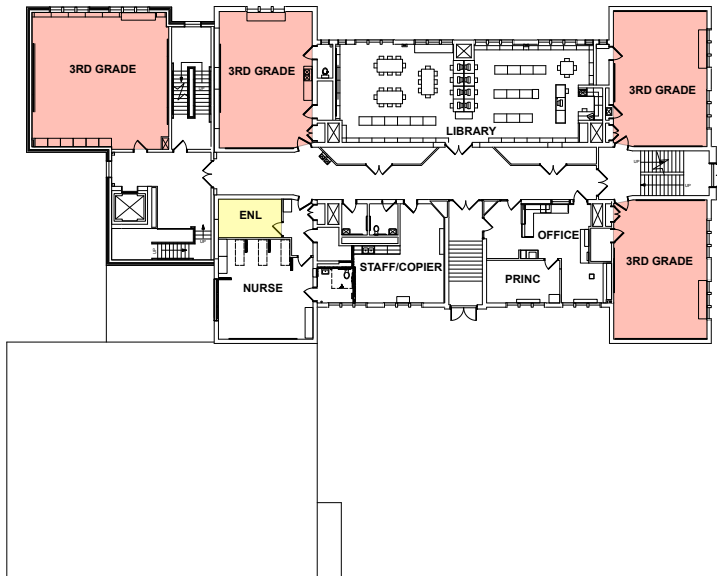
LEGEND

 2ND GRADE	 SPECIAL EDUCATION
 3RD GRADE	 SUPPORT SERVICES
	 SPECIAL SUBJECT

- (6) 2ND GRADE CLASSROOMS
- (6) 3RD GRADE CLASSROOMS
- (3) SPECIAL ED CLASSROOMS
- (1) FULL SIZE SUPPORT CLASSROOM [OT/PT/SPEECH]
- (5) SUPPORT SERVICES
- (2) FULL SIZE SPECIAL SUBJECT CLASSROOMS [ART & MUSIC]

Playground

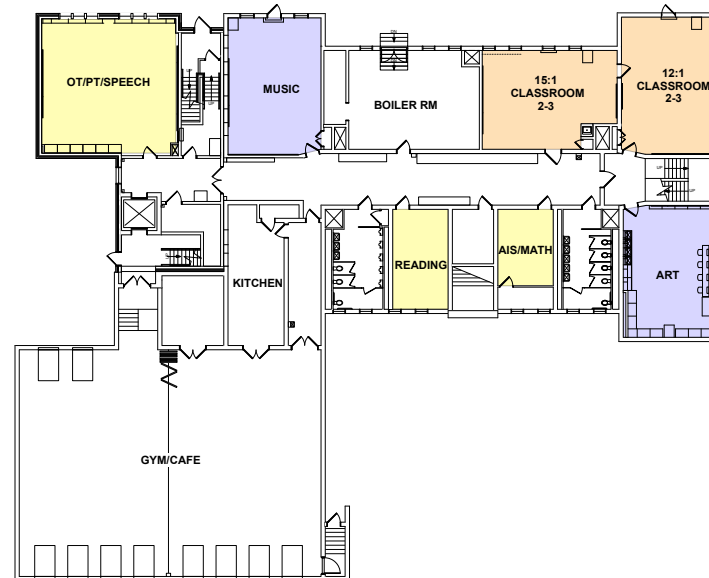
Parking Lot



FIRST FLOOR PLAN

Street

Parking Lot



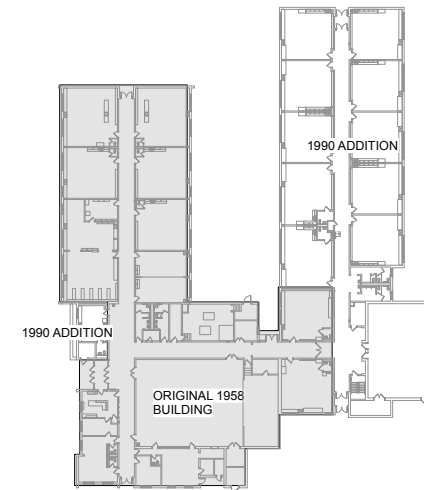
BASEMENT FLOOR PLAN



Bus Loop

Playground

Parking Lot



FIRST FLOOR VINTAGE PLAN

LEGEND

 4TH GRADE	 SPECIAL EDUCATION
 5TH GRADE	 SUPPORT SERVICES
	 SPECIAL SUBJECT

(6) 4TH GRADE CLASSROOMS
 (6) 5TH GRADE CLASSROOMS
 (3) SPECIAL ED CLASSROOMS
 (1) FULL SIZE SUPPORT CLASSROOM [OT/PT/SPEECH]
 (6) SUPPORT SERVICES
 (1) FULL SIZE SHARED SPECIAL SUBJECT CLASSROOM [ART/MUSIC/CHORUS]
 BAND ON STAGE

4-5

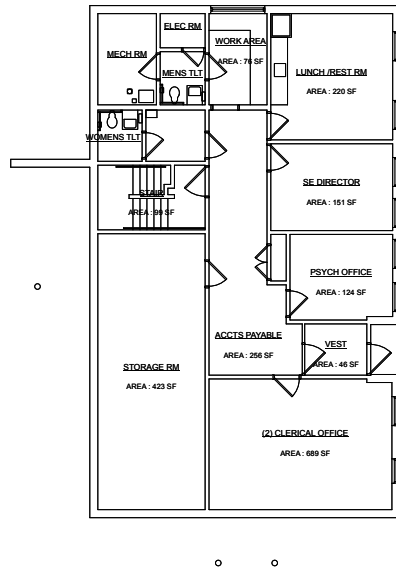
District Office (DO) Building Options

- If an elementary school is closed, should the district
 - Option 1: Keep the building for district use (i.e. Full-day Pre-K program; district offices, other)
 - Move full-day Pre- K program
 - Move district offices
 - ❖ Sell or lease district office building
 - Option 2: Lease the elementary building to another organization
 - Option 3: Sell the elementary building
- Costello Transportation Building
 - Upstairs area - currently leased by BOCES

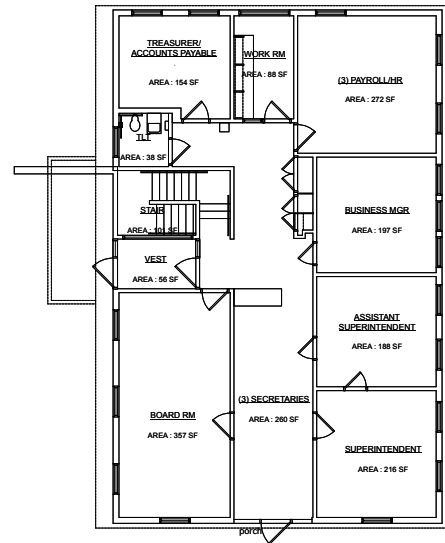
District Office (DO) Building Options

- If an elementary school is closed, should the district
 - Option 1: Keep the building for district use
(i.e. Full-day Pre-K program; district offices, other)
 - Move full-day Pre- K program
 - Move district offices
 - ❖ Sell or lease district office building

Note: If the district keeps the elementary building, this option **decreases the estimated staff savings** shown in a previous slide. A reduction in savings would depend on the program delivery of the Pre-K program (staff coverage, specials, custodial staff, teacher aides, food service).



FIRST FLOOR PLAN

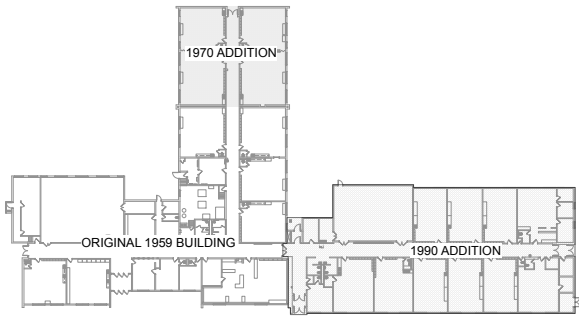


GROUND FLOOR PLAN

king + king
ARCHITECTS

ADMINISTRATION BUILDING
166 SANVELS STREET
ONEIDA, NY 13621

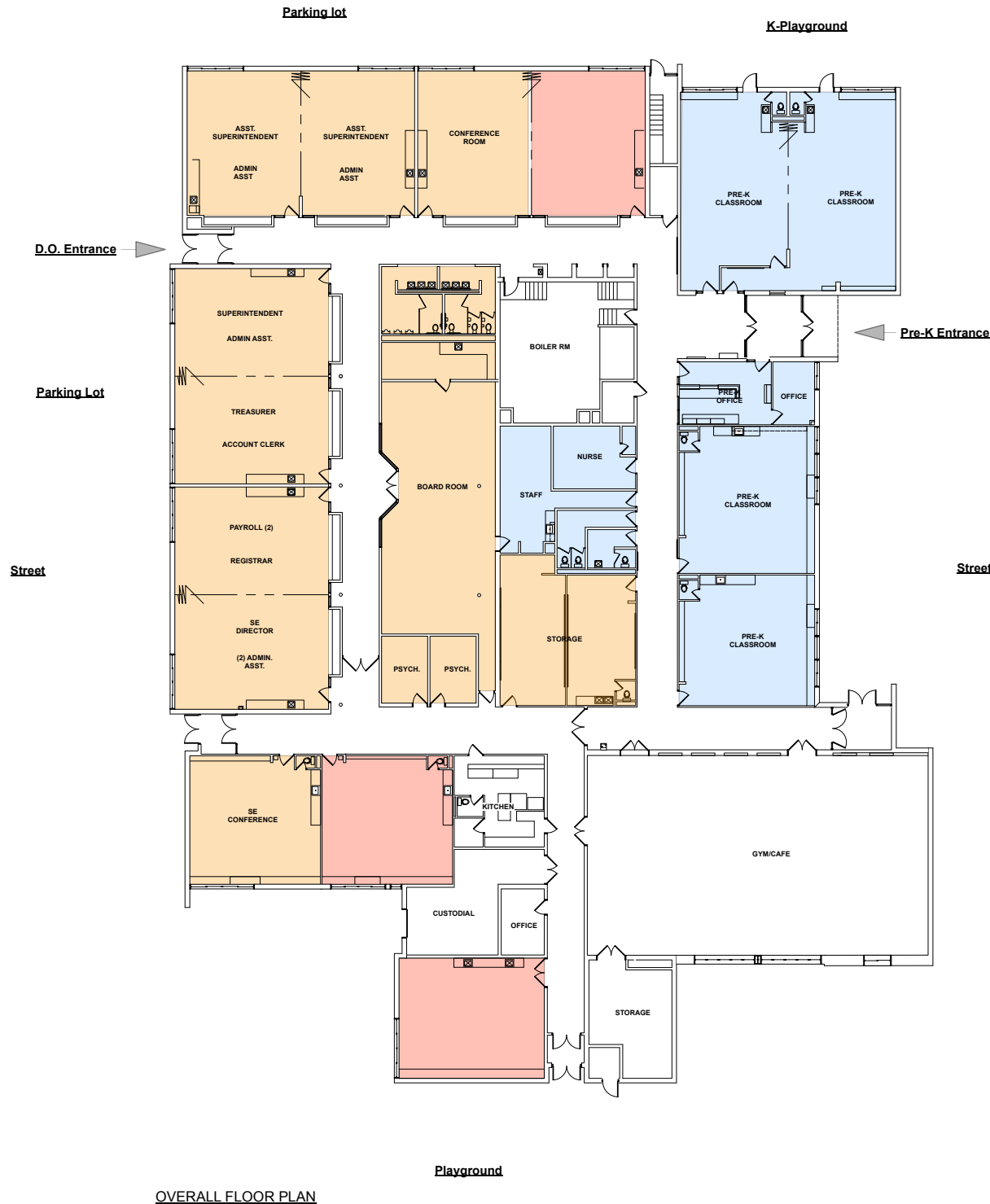




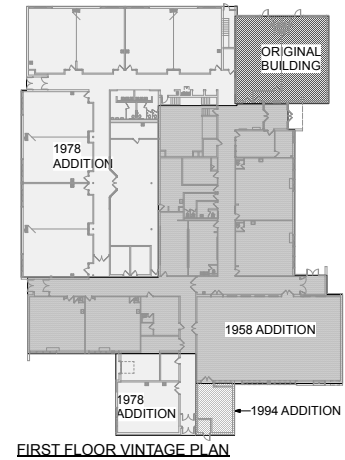
FIRST FLOOR VINTAGE PLAN



FIRST FLOOR PLAN



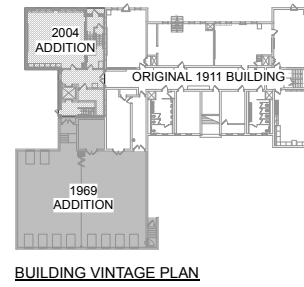
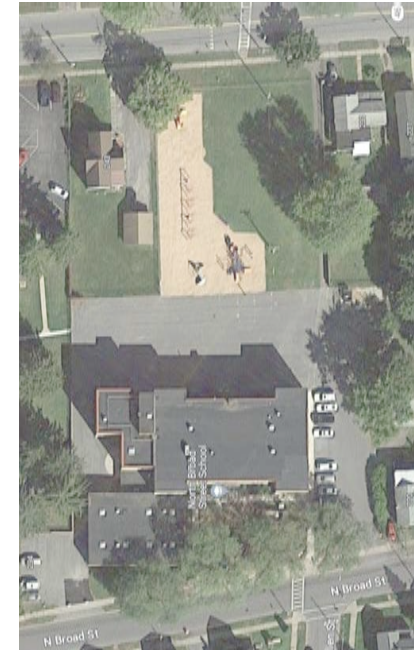
OVERALL FLOOR PLAN



LEGEND

- Pre-K Space
- District Office Space
- Extra Classroom Space

- (4) Pre-K Classrooms with toilet rooms
- (2) Spaces for additional full size classrooms with toilet room
- (1) Space for additional full size classrooms with no toilet room



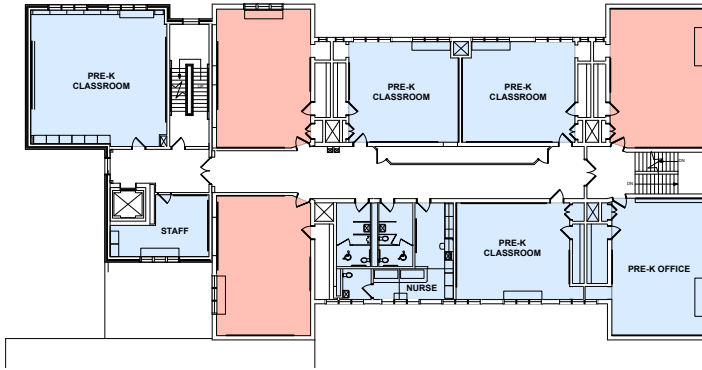
BUILDING VINTAGE PLAN

LEGEND

- Pre-K Space
- District Office Space
- Extra Classroom Space

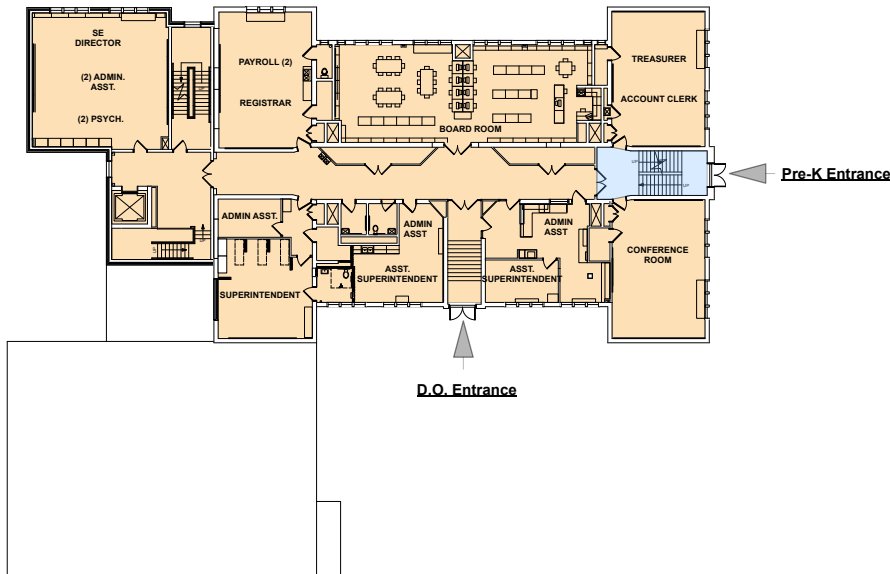
(4) Pre-K Classrooms with no toilet rooms
 (3) Spaces for additional full size classrooms with no toilet room on 2nd floor
 (3) Spaces for additional full size classrooms with no toilet room in Basement

Pre-K Classroom Floor



SECOND FLOOR PLAN

D.O. Floor



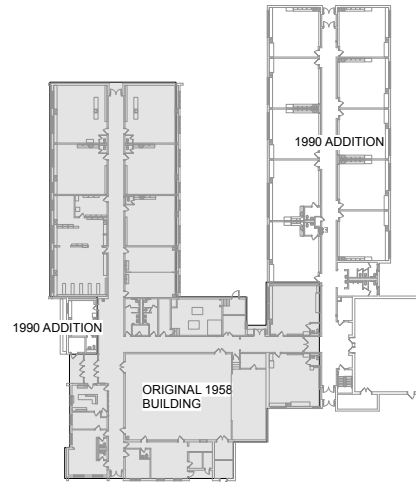
FIRST FLOOR PLAN

Playground

Parking Lot



BASEMENT FLOOR PLAN



FIRST FLOOR VINTAGE PLAN



OVERALL FLOOR PLAN

LEGEND

- Pre-K Space
- District Office Space
- Extra Classroom Space

(4) Pre-K Classrooms with toilet rooms
 (1) Space for additional full size classroom with toilet room in Pre-K wing
 (1) Space for additional full size classroom with no toilet room in Pre-K wing
 (3) Spaces for additional full size classroom with no toilet rooms in D.O. wing
 (1) Extra Gym space

Summary of Elementary Full Size Classrooms

2022-23 Summary of Elementary Full Size Classrooms by Building

School	Grade Levels	# of Students	# of Full Size Common Branch Classroom	# of Full Size Special Education Classrooms	# of Other Full Size Classrooms	Total # of Full Size Classrooms
Durhamville	K-5	217	12	3	2	17
North Broad	K-5	173	10	0	7	17
Seneca Street	K-5	203	12	0	3	15
Willard Prior	Pre-K-5	140 (+ 81 Pre-K)	6 + Pre-K (2) + UCP (3)	4 + 1RR	3 4	19 20
Total	K-5	733 (+ 81 Pre-K)	40 + Pre-K(2) + UCP (3)	8	16	69

Summary of Elementary Full Size Classrooms

2023-24 Summary of Elementary Full Size Classrooms by Building

School	Grade Levels	# of Students	# of Full Size Common Branch Classroom	# of Full Size Special Education Classrooms	# of Other Full Size Classrooms	Total # of Full Size Classrooms
Durhamville	K-5	217	12	3	2	17
North Broad	K-5	173	8	0	9	17
Seneca Street	K-5	203	12	0	3	15
Willard Prior	Pre-K-5	140 (+ 81 Pre-K)	6 + Pre-K (4)	5 + 1RR	4	20
Total	K-5	733 (+ 81 Pre-K)	38 + Pre-K (4)	9	18	69

2022-2023 Grade Configuration Options (Pre-K-5); (K-2; 3-5); (K-1; 2-3; 4-5)

	Current Configuration Pre-K-5 (Four School Buildings)				Possible Future Option K-2; 3-5 (Four School Buildings)			Possible Future Option Pre-K -5 Option (Three School Buildings)			Possible Future Option K-1; 2-3 ; 4-5 (Three School Buildings)		
Schools	Number of Sections	Number of Students		Average # of Students	Number of Sections	Number of Students	Average # of Students						
DV	12	217	212	18.1	9	176	19.6						
School A								12	234	19.5	12	225	18.8
North Broad	10	173	175	17.3	9	175	19.8						
School B								12	234	19.5	12	255	21.3
Seneca Street	12	203	212	16.9	9	175	19.4						
School C								12	236	19.5	12	224	19.7
Willard Prior	6	111	105	18.5	9	175	19.4						
Total	40	704	17.6	17.6	36	704	19.6	36	704	19.7	36	704	19.6

2023-2024 Grade Configuration Options (Pre-K-5); (K-2; 3-5); (K-1; 2-3; 4-5)

	Current Configuration Pre-K-5 (Four School Buildings)			Possible Future Option K-2; 3-5 (Four School Buildings)			Possible Future Option Pre-K -5 Option (Three School Buildings)			Possible Future Option K-1; 2-3 ; 4-5 (Three School Buildings)			
Schools	Number of Sections	Number of Students		Average # of Students	Number of Sections	Number of Students	Average # of Students						
DV	12	217	212	18.1	9	176	19.6						
School A								12	234	19.5	12	225	18.8
North Broad	10 8	173	175	17.3	9	175	19.8						
School B								12	234	19.5	12	255	21.3
Seneca Street	12	203	212	16.9	9	175	19.4						
School C								12	236	19.5	12	224	19.7
Willard Prior	6	111	105	18.5	9	175	19.4						
Total	40 38	704	17.6	17.6	36	704	19.6	36	704	19.7	36	704	19.6

Communicate the “Why”

Declining Enrollment

- The district has seen declining enrollments and will likely continue to see enrollments drop.
- K-12 enrollment has declined over the past 11 years.
 - In 2012-13: 2,211 students
 - In 2017-18: 1,948 students
 - In 2022-23: 1,689 students (23.6% decrease from 2012-13)
- This decline is expected to continue over the next five years
 - In 2024-25: 1584 students
 - In 2027-28: 1445 students (14.4%.decrease from 2022-23)

This future decline will impact all three grade ranges – elementary, middle school and high school.
- Area schools have seen similar decreases.

Elementary Class Size

- In 2017-2018: student enrollment – 48 sections, 858 students
 - DV: 12 sections, 252 students, average class size, 21.0
 - NB: 12 sections, 257 students, average class size, 21.4
 - SS: 12 sections, 200 students, average class size, 16.7
 - WP: 12 sections, 149 students, average class size, 12.4
- In 2022- 2023: student enrollment – 40 sections, 733 students
 - DV: 12 sections, 217 students, average class size, 18.1
 - NB: 10 sections, 173 students, average class size, 17.3
 - SS: 12 sections, 203 students, average class size, 16.9
 - WP: 6 sections, 141 students, average class size, 18.5
- In 2023- 2024 projected student enrollment – 38 sections, **711** students
- In 2024-2025 projected student enrollment – 36 sections, **710** students
- In 2025-2026 and 2026-2027 projected student enrollment – **33** sections.
670 and **653** students respectively

Updated Oneida K-12 Enrollment History and Projections - 2017-18 to 2029-30

Grade	2017-18	2018-19	2019-20	2020-21	2021-22	2022-23	2023-24	2024-25	2025-26	2026-27	2027-28	2028-29	2029-30
Birth Year	2012	2013	2014	2015	2016	2017	2018	2019	2020	2021	2022	2023	2024
Live Births	176	155	159	167	157	159	139	159	124	148	148	148	148
Pre-K													
K	137	122	142	135	127	109	110	124	98	117	117	117	117
1	148	132	120	139	138	131	109	110	123	98	116	116	116
2	143	149	132	111	127	130	125	104	105	118	94	111	111
3	151	131	142	117	113	130	125	120	100	101	113	90	107
4	152	144	138	126	118	115	128	123	118	98	99	111	89
5	147	149	152	128	128	118	115	127	122	118	98	99	111
6	155	148	149	142	121	130	116	112	125	120	116	96	97
7	162	149	139	147	139	123	127	113	110	122	117	113	94
8	138	162	143	140	138	138	121	124	111	107	119	115	111
9	160	142	156	146	133	138	137	120	123	110	107	119	114
10	153	155	140	157	148	137	138	137	120	124	110	107	119
11	131	147	157	140	154	138	134	135	134	117	121	107	104
12	165	137	136	156	136	152	136	132	133	132	115	119	106
K-12 Total	1942	1867	1846	1784	1720	1689	1619	1584	1525	1484	1445	1424	1399
K-5 Total	878	827	826	756	751	733	711	710	670	653	641	648	655
6-8 Total	455	459	431	429	398	391	363	350	345	349	352	323	301
9-12 Total	609	581	589	599	571	565	545	524	510	482	453	452	443

Updated Elementary School Enrollments by Grade Level

Updated Six-Year Projection by Grade Level								
Grades	2023-24	2024-25	2025-26	2026-27	2027-28	2028-29	2029-30	% Change 2023-24 to 2029-30
K-5	711	710	670	653	641	649	655	-56 (-7.9%)
6-8	363	350	345	349	352	323	301	-62 (-17.1%)
9-12	545	524	510	482	453	452	443	-102 (-18.7%)
Total	1619	1584	1525	1484	1445	1424	1399	-220 (-13.6%)



2022-2023 Pre-K-5 Grade Configuration

2022-2023 Student Enrollment						
Current (4) K-5 Elementary School Grade Configuration– 40 Sections						
Class Size by Section for each K-5 Elementary School						
Grade		Current Number of Sections and Class Size of Each Section				
	Total # of Students by Grade	Durhamville (K-5)	North Broad (K-5)	Seneca Street (K-5)	Willard Prior (K-5)	# of Sections
Pre-K		-	-	-	81*	
K	102	15,16	22	17,18	14	6
1	123	22,22	20	19,20	20	6
2	129	17,17	19,20	18,19	19	7
3	126	15,19	16,17	18,19	22	7
4	112	17,18	13,14	14,15	21	7
5	112	19,20	16,16	13,13	15	7
K-5 Total	704	12 Sections 217 Students (18.1 avg.)	10 Sections 173 Students (17.3avg.)	12 Sections 203 Students (16.9 avg.)	6 Sections 111 Students (18.5 avg.)	40 Sections 704 Students (17.6 avg.)

Note: * The Pre-K program is a half-day program. Pre-K students are not included in the total number of students.

2023-2024 Pre-K-5 Grade Configuration

2023-2024 Student Enrollment as **of date** Current (4) K-5 Elementary School Grade Configuration—38 Sections Class Size by Section for each K-5 Elementary School

Grade		Current Number of Sections and Class Size of Each Section				
	Total # of Students by Grade	Durhamville (K-5)	North Broad (K-5)	Seneca Street (K-5)	Willard Prior (K-5)	# of Sections
Pre-K		-	-	-	72*	
K	TBD	TBD	TBD	TBD	TBD	6
1	102	15,16	22	17,18	14	6
2	123	22,22	20*	19,20	20	6
3	129	17,17	19,20	18,19	19	7
4	126	15,19	16,17	18,19	22	7
5	112	17,18	27*	14,15	21	6
K-5 Total	704	12 Sections 217 Students (18.1 avg.)	8 Sections 173 Students (17.3avg.)	12 Sections 203 Students (16.9 avg.)	6 Sections 111 Students (18.5 avg.)	38 Sections 704 Students (17.6 avg.)

Note: * The Pre-K program is a half-day program. Pre-K students are not included in the total number of students.

2023-2024 Pre-K-5 Grade Configuration

2023-2024 Student Enrollment Current (4) K-5 Elementary School Grade Configuration– 38 Sections Class Size by Section for each K-5 Elementary School

Grade		Assuming an Equal Distribution of Students by Section for each Elementary School				
	Total # of Students by Grade	Durhamville	North Broad	Seneca Street	Willard Prior	# of Sections
Pre-K		-	-	-	72*	
K	TBD	TBD	TBD	TBD	TBD	6
1	102	17,17	17	17,17	17	6
2	123	20,21	21*	20,21	20	6
3	129	18,19	18,19	18,19	18	7
4	126	18,18	18,18	18,18	18	7
5	112	18,19	19*	18,19	19	6
K-5 Total	704	12 Sections 212 (17.7 avg.)	8 Sections 175 (17.5 avg.)	12 Sections 212 (17.7 avg.)	6 Sections 105 (17.5 avg.)	38 Sections 704 (17.6 avg.)

Note: * The Pre-K program is a half-day program. Pre-K students are not included in the total number of students.

Grade Center Configuration With Four Elementary Schools

2022-2023 Student Enrollment						
Possible K-2; 3-5 Grade Center Configuration with 4 Elementary Schools						
36 Total Sections (9 Sections Per School)						
Grade	Total # of Students by Grade	School A (K-2)	School B (K-2)	School C (3-5)	School D (3-5)	# of Sections/ Avg. Section Size
Pre-K	81*					
K	102	51/3 Sections	51/3 Sections			6/17.0
1	123	61/3 Sections	62/3 Sections			6/20.5
2	129	64/3 Sections	65/3 Sections			6/21.5
3	126			63/3Sections	63/3 Sections	6/21.0
4	112			56/3 Sections	56/3 Sections	6/18.7
5	112			56/3 Sections	56/3 Sections	6/18.7
K-5 Total	704	176/9 Sections	178/ 9 Sections	175/9 Sections	175/9 Sections	36/19.6
Average		Avg. = 19.6	Avg. = 19.8	Avg. = 19.4	Avg. 19.4	
* The Pre-K program is currently a half-day program. In the 2023-24 school year, a full day Pre-K program will be run with students housed at Willard Prior.						

Grade Center Configuration With Four Elementary Schools

2022-2023 Student Enrollment Possible K-2; 3-5 Grade Center Configuration with 4 Elementary Schools 36 Total Sections (9 Sections Per School)							
Grade	Total # of Students by Grade	# of Students Per School	Willard Prior (K-2)	Seneca (K-2)	North Broad (3-5)	Durhamville (3-5)	# of Sections/ Avg. Section Size
Pre-K	81*		Pre-K	Pre-K			
K	102	51	17,17,17	17,17,17			6/17.0
1	123	61 or 62	20,20,21	20,21,21			6/20.5
2	129	64 or 65	21,21,22	21,22,22			6/21.5
3	126	63			21,21,21	21,21,21	6/21.0
4	112	56			18,19,19	18,19,19	6/18.7
5	112	56			18,19,19	18,19,19	6/18.7
K-5 Total	704		176/9 Sections	178/ 9 Sections	175/9 Sections	175/9 Sections	36/19.6
Average			Avg. = 19.6	Avg. = 19.8	Avg. = 19.4	Avg. 19.4	
* The Pre-K program is currently a half-day program. In the 2023-24 school year, a full day Pre-K program will be run with students housed at Willard Prior.							

Grade Center Configuration With Four Elementary Schools

2023-2024 Student Enrollment as of date Possible K-2; 3-5 Grade Center Configuration with 4 Elementary Schools 36 Total Sections (9 Sections Per School)							
Grade	Total # of Students by Grade	# of Students Per School	Willard Prior (K-2)	Seneca (K-2)	North Broad (3-5)	Durhamville (3-5)	# of Sections/ Avg. Section Size
Pre-K	72*		18,18	18,18			4/18.0
K	TBD	TBD	TBD	TBD			6/TBD
1	102	51	17,17,17	17,17,17			6/17.0
2	123	61 or 62	20,20,21	20,21,21,			6/20.5
3	129	64 or 65			21,21,22	21,22,22	6/21.5
4	126	63			21,21,21	21,21,21	6/21.0
5	112	56			18,19,19	18,19,19	6/18.7
K-5 Total	704		176/9 Sections	178/ 9 Sections	175/9 Sections	175/9 Sections	36/19.6
Average			Avg. = 19.6	Avg. = 19.8	Avg. = 19.4	Avg. 19.4	
* The Pre-K program is currently a half-day program. In the 2023-24 school year, a full day Pre-K program will be run with students housed at Willard Prior.							

Pre-K-5 - Close One of the Elementary Schools

2022-2023 Student Enrollment with (3) K-5 Elementary Schools Assuming an Equal Distribution of Students 36 Total Sections (12 Sections Per School)

Grade	Total # of Students by Grade	# of Students Per School	School A (K-5)	School B (K-5)	School C (K-5)	# of Sections
Pre-K	81*					
K	102	34	17,17	17,17	17,17	6
1	123	41	20,21	20,21	20,21	6
2	129	43	21,22	21,22	21,22	6
3	126	42	21,21	21,21	21,21	6
4	112	37 or 38	18,19	18,19	19,19	6
5	112	37 or 38	18,19	18,19	19,19	6
K-5 Total	704	234 or 236	234/12 Sections	234/12 Sections	236/12 Sections	36
Average			Avg. = 19.5	Avg. = 19.5	Avg. = 19.7	

* The Pre-K program is currently a half-day program. In the 2023-24 school year, a full day Pre-K program will be run with students housed at Willard Prior.

Pre-K-5 - Close One of the Elementary Schools

2023-2024 Student Enrollment with (3) K-5 Elementary Schools Assuming an Equal Distribution of Students 36 Total Sections (12 Sections Per School)

Grade	Total # of Students by Grade	# of Students Per School	Willard Prior (K-5)	Seneca Street or North Broad (K-5)	Durhamville (K-5)	# of Sections/Ave. Section Size
Pre-K	72*					
K	TBD	TBD	TBD	TBD	TBD	6
1	102	34	17,17	17,17	17,17	6
2	123	41	20,21	20,21	20,21	6
3	129	43	21,22	21,22	21,22	7
4	126	42	21,21	21,21	21,21	7
5	112	37 or 38	18,19	18,19	19,19	6
K-5 Total	704	234 or 236	234/12 Sections	234/12 Sections	236/12 Sections	36
Average			Avg. = 19.5	Avg. = 19.5	Avg. = 19.7	

* The Pre-K program is currently a half-day program. In the 2023-24 school year, a full day Pre-K program will be run with students housed at Willard Prior.

Grade Center Configuration (K-1;2-3;4-5)

Close One of the Elementary Schools

2022-2023 Student Enrollment					
Possible K-1; 2-3; 4-5 Grade Center Configuration with 3 Elementary Schools					
36 Total Sections (12 Sections Per School)					
Grade	Total # of Students by Grade	School A (K-1)	School B (2-3)	School C (4-5)	# of Sections/ Avg. Section Size
Pre-K	81*				
K	102	102/6 Sections			6/17.0
1	123	123/6 Sections			6/20.5
2	129		129/6 Sections		6/21.5
3	126		126/6 Sections		6/21.0
4	112			112/6 Sections	6/18.7
5	112			112/6 Sections	6/18.7
K-5 Total	704	225/12 Sections	255/ 12 Sections	224/12 Sections	36/19.6
Average		Avg. = 18.8	Avg. = 21.3	Avg. = 18.7	
* The Pre-K program is currently a half-day program. In the 2023-24 school year, a full day Pre-K program will be run with students housed at Willard Prior.					

Grade Center Configuration (K-1;2-3;4-5)

Close One of the Elementary Schools

2022-2023 Student Enrollment					
Possible K-1; 2-3; 4-5 Grade Center Configuration with 3 Elementary Schools					
36 Total Sections (12 Sections Per School)					
Grade	Total # of Students by Grade	Willard Prior (K-1)	Seneca Street or North Broad (2-3)	Durhamville (4-5)	# of Sections/ Avg. Section Size
Pre-K	81*				
K	102	17,17,17,17,17,17			6/17.0
1	123	20,20,20,21,21,21			6/20.5
2	129		21,21,21,22,22,22		6/21.5
3	126		21,21,21,21,21,21		6/21.0
4	112			18,18,19,19,19,19	6/18.7
5	112			18,18,19,19,19,19	6/18.7
K-5 Total	704	225/12 Sections	255/ 12 Sections	224/12 Sections	36/19.6
Average		Avg. = 18.8	Avg. = 21.3	Avg. = 18.7	

* The Pre-K program is currently a half-day program. In the 2023-24 school year, a full day Pre-K program will be run with students housed at Willard Prior.

Grade Center Configuration (K-1;2-3;4-5)

Close One of the Elementary Schools

2022-2023 Student Enrollment					
Possible K-1; 2-3; 4-5 Grade Center Configuration with 3 Elementary Schools					
36 Total Sections (12 Sections Per School)					
Grade	Total # of Students by Grade	Willard Prior (K-1)	Seneca Street or North Broad (2-3)	Durhamville (4-5)	# of Sections/ Avg. Section Size
Pre-K	72*				
K	TBD	TBD	TBD	TBD	6/TBD
1	102	17,17,17,17,17,17			6/17.0
2	123		20,20,20,21,21,21		6/20.5
3	129		21,21,21,22,22,22		6/21.5
4	126			21,21,21,21,21,21	6/21.0
5	112			18,18,19,19,19,19	6/18.7
K-5 Total	704	225/12 Sections	255/ 12 Sections	224/12 Sections	36/19.6
Average		Avg. = 18.8	Avg. = 21.3	Avg. = 18.7	
* The Pre-K program is currently a half-day program. In the 2023-24 school year, a full day Pre-K program will be run with students housed at Willard Prior.					

Grade Configuration

Option 1: Status Quo – Keep Four K-5 Elementary Schools

In the near future, there will be a single classroom section in each grade in two K-5 school buildings.

There are four elementary attendance zones, but approximately 21 % of students are transported out of their attendance zone.

There is unequal class size between the four school buildings.

Special education classrooms (15-1, 12-1-1 , 8-1-1 and 6-1-1) are housed in two of the four school buildings.

Four Full day Pre-K classrooms are housed in one school building.

Financial – Less cost savings would occur vs closing an elementary building.

Grade Configuration

Option 2: Keep Four School Buildings, Transition to Grade Center Plan (K-2; 3-5; K-2; 3-5)

In this configuration there will be two elementary attendance zones instead of the four attendance zones currently used for the four K-5 elementary schools.

Students in each attendance zone would attend school together in one building for grades K-2 and that same group of students would continue to a second school 3-5 (sister schools).

- For example:
 - WP and NB residences could be one attendance zone. In this scenario, students would attend WP for grades K-2 and NB for grades 3-5.
 - SS and DV residences could be the second attendance zone. Students in this attendance zone would attend SS for grades K-2 and DV for grades 3-5.

Balancing class size (three sections per grade level, three grade levels per building) in each building would be somewhat easier and also with two attendance zones vs. four attendance zones.

Four full day Pre-K classrooms could be housed in the two K-2 school buildings.

Special education classrooms (15-1, 12-1-1, 8-1-1 and 6-1-1) are housed in all of the four school buildings and aligned as much as possible by the grade level bands (K-2; 3-5). WP still has the most special education classrooms of the four buildings.

Transportation – impact of any grade configuration changes needs to be determined.

Financial – Less cost savings would occur vs closing an elementary building.

Grade Configuration

Option 3: – Close an Elementary School Three School Buildings (K-5)

In this configuration there will be three elementary attendance zones instead of four attendance zones currently used for the four K-5 elementary schools.

Balancing class size would be somewhat easier with three attendance zones vs. four attendance zones.

Is there enough space in each building to house elementary students in three schools?

Twelve grade level sections (two sections per grade level, six grade levels per building) is tight with other support services programs and with additional special education classrooms in each building.

Special education classrooms (15-1, 12-1-1 , 8-1-1 and 6-1-1) are housed in each of the three school buildings. WP still has the most special education classrooms of the four buildings.

Four full day Pre-K classrooms do not currently fit in any of the three school buildings based on the current student enrollment and special education programs.

Transportation – impact of any grade configuration changes needs to be determined.

Financial – Significant savings can be realized by closing an elementary school and either creating a three grade center configuration (K-1;2-3;4-5) or a K-5 grade configuration with three neighborhood schools.

Grade Configuration

Option 4: – Close an Elementary School Three School Buildings (K-1; 2-3; 4-5)

In this configuration there are no elementary attendance zones. Transportation would be provided to an elementary school based on the grade level of the student.

Balancing class size would be able to be done with all sections of a grade level in one building.

Is there enough space in each building to house elementary students in three schools?

Twelve grade level sections (six sections per grade level, two grade levels per building) is tight with other support services programs and with additional special education classrooms in each building.

Special education classrooms (15-1, 12-1-1 , 8-1-1 and 6-1-1) are housed in each of the three school buildings and aligned as much as possible by the grade level bands (K-1; 2-3; 4-5). WP still has the most special education classrooms of the four buildings.

Four full day Pre-K classrooms do not currently fit in any of the three school buildings based on the current student enrollment and special education programs.

Transportation – impact of any grade configuration changes needs to be determined. In this configuration, start and end times for students may be staggered. Currently the middle school and high school have staggered times.

Financial – Significant savings can be realized by closing an elementary school and either creating a three grade center configuration (K-1;2-3;4-5) or a K-5 grade configuration with three neighborhood schools.

How would closing a building or changing a grade configuration impact transportation?

- On average, would students be on buses longer?
- Would there be increased costs for additional runs or buses?
- Would there be any savings for transportation?

2024-2025 Summary of Estimated Savings by Option (Includes Fringe Benefits)

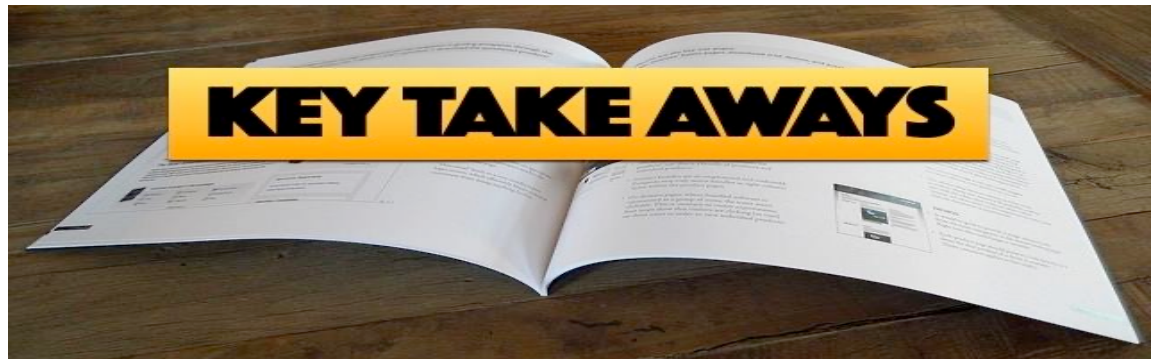
Option	2024-2025 Estimated Staffing Savings
1-Status Quo – (K-5) (Four K-5 Elementary Schools)	Continued reduction of classroom sections based on declining enrollment <ul style="list-style-type: none"> • 2022-2023 school year (40 Classroom Sections) • 2023-2024 school year (38 Classroom Sections) • 2024-2025 school year (36 Classroom Sections) <ul style="list-style-type: none"> • 2 classroom teachers @ \$75,509.....\$151,018 <li style="text-align: right;">Benefits.....<u>\$78,529</u> <li style="text-align: right;">\$229,947 Total 2024-2025 Estimated Savings\$229,947
2-Grade Center Plan - (K-2;3-5) (Four Elementary Schools) <ul style="list-style-type: none"> • Two Schools: Grades K-2 • Two Schools: Grades 3-5 	Transition from K-5 to grades K-2; 3-5 <ul style="list-style-type: none"> • 2024-2025 school year (36 Classroom Sections) <ul style="list-style-type: none"> • 2 classroom teachers @ \$75,509.....\$151,018 <li style="text-align: right;">Benefits.....<u>\$78,529</u> <li style="text-align: right;">\$229,947 Total 2024-2025 Estimated Savings \$229,947
3-Close an Elementary School – (K-5) (Three K-5 Elementary Schools) <p style="text-align: center; margin: 10px 0;">OR</p> 4-Close an Elementary School Grade Center Plan: (K-1;2-3;4-5) (Three Elementary Buildings) <ul style="list-style-type: none"> • One School: Grades K-1 • One School :Grades 2-3 • One School: Grades 4-5 	Option 3 &4: Reduction of the following positions: (Average Salary) <ul style="list-style-type: none"> 1 administrator @ \$117,478.....\$117,478 2 classroom teachers @ \$75,509.....\$151,018 1 physical education teacher @ \$75,509\$75,509 0.5 librarian @ \$75,509..... ..\$37,755 0.5 art teacher @ \$75,509.....\$37,755 1 nurse @ \$ 52,811.....\$52,811 1 secretary @ \$36,996.....\$36,996 3 teacher aides @ \$14,455.....\$43,365 2 food service @\$12,800.....\$25,600 2 custodians @ 39,690.....<u>\$79,380</u> TOTAL SALARIES \$657,667 BENEFITS + <u>\$306,125</u> Total 2024-2025 Estimated Savings.....\$963,792**
**Use of average salary may make these est. savings higher than actual savings	

Grade Configuration Options

Questions/Comments/Breakout Session

TAKEAWAYS

- For this study, four feasible options have been identified to date
 - Status quo with four school buildings and continuing to consolidate class sections at North Broad Elementary School.
 - Grade center configuration with four school buildings: K-2; 3-5 (sister schools), and
 - Closing an elementary school with two scenarios:
 - Three K-5 Schools
 - Three grade center schools (K-1;2-3; 4-5)



Next Scheduled Advisory Committee Meetings

(Optional tours will precede each meeting and will begin at 5:45 pm)

- Thursday, September 28, 2023 at Otto Shortell Middle School.
- Thursday, October 26, 2023 at Oneida High School



(Meetings will begin at 6:30 pm and last no longer than two hours)

Questions????



Advisory Committee Meeting Schedule

(Meetings will begin at 6:30 pm and last approximately two hours)

- January 26, 2023
- February 16, 2023
- ~~March 13, 2023~~ (March 21)
- April 27, 2023
- ~~May 25, 2023~~ (June 5)
- September 28, 2023
- October 26, 2023
- November Date TBD – if necessary



(Optional tours precede meetings 2-7 and will begin at 5:45 pm)

Focus/Location of Each Meeting

Date	Topic	Location
Thursday, January 26	General overview of the study process including the committee's role; student enrollment projections	Costello Training Center
Thursday, February 16	Overview of the elementary program Overview of district facilities	Durhamville Elem. Gym
Monday, March 13 Tuesday, March 21	Overview of district facilities Overview of the elementary program	Willard Prior Elem. Gym
Thursday, April 27	Overview of district transportation operation; Overview of middle school and high school program	Seneca Street Elem. Gym
Thursday, May 25 Monday, June 5	Staffing patterns in the district; Begin Continue exploring possible future facility options	North Broad Street Elem. Gym
Thursday, September 28	The financial status of the district and continued implications of possible future facility options. Overview of middle school and high school program	Otto Shortell MS Gym
Thursday, October 26	Review of draft final report	Oneida High School Gym
November Date TBD	Review of draft final report	Costello Training Center